



ACT FORUM
'23

architect'23



www.actforum2023.com

About Architect Expo 2023

ACT Forum is the International Forum on Architecture hosted by the Architect Council of Thailand (ACT), intending to provide professional knowledge in response to the dynamics of society, which will help the professionals/ architectural academicians to be able to support the expectations of society properly and with better quality. ACT Forum will cover all four architectural professional fields – Architecture, Interior Design and Decorative Arts, Landscape Architecture, and Urban Architecture. The event was first held in 2019 under the concept of REACT – Respond, Expansion, and Continuous. In the year 2020, due to the pandemic, the event needs to transform into a hybrid mode to ensure the participants' safety and become fully online in 2021 as the pandemic is getting worse.

As the situation began to alleviate this year, in 2023, another form of ACT Forum will occur. It will consider the first time of organizing ACT Forum with the collaboration of four Architectural professional associations as Co-host in Architect'23 under the concept of 'ต๋มต๋ม : Time of Togetherness.' The architects' work is directly related to the society and culture, which the critical culture and the collective identity that represents Thai people is 'Food.' Hence, we choose to use the Thai dish called 'ต๋มต๋ม' or 'Som Tum Tray' to be the food that represents the combination of all architecture fields. As the Architect Council of Thailand (ACT) is the moderator of the theme, ACT is like a tray that supports all professional associations.

The ACT Forum'23 is scheduled for 25 – 30 April 2023 at Challenger Hall, IMPACT Muang Thong Thani.

About Architect Expo 2023

The heart of ACT Forum'23 is to give more understanding of architectural professions and the work process of all four branches, including Architecture, Interior Design and Decorative Arts, Landscape Architecture, and Urban Architecture, to the architects and general public in the form of collaboration. One way to generate the topic that will be discussed is to start with projects that are expected to attract participants' attention or the current social issue.

ACT has invited International and Thai speakers from four professions, such as

- Jakob Dunkl, Founder | Owner | CEO, querkraft architects from Austria
- Damian Thompson, Co-owner | Director, LatStudios, Registered Landscape Architect, Fellow of the Australian Institute of Landscape Architects (Faila) from Australia
- Wong Mun Summ, Founding Director, WOHA from Singapore
- Fun Siew Leng, Chief Urban Designer, Urban Redevelopment Authority (URA) from Singapore
- Angela Spathonis, Principal | Managing Director, Gensler from Singapore

to share design experiences and create perspectives and collaboration direction with each other in the area of the management of sustainability, according to the theme 'ต๋ำถာด : Time of Togetherness'

Letter From The President Of ACT Forum'23

Collaboration is a vital mechanism for the development and diversification of ideas. When it comes to design, collaborative efforts between individuals with specialized knowledge from various fields of profession can result in new stories and limitless creative possibilities that a society can thrive on.

Hosted by the Architect Council of Thailand, ACT FORUM is an international architectural forum that aims to communicate professional knowledge in ways that truly relate to society's evolving dynamics while also enabling architectural professionals and academics to better understand and accommodate the public's expectations and perceptions. Architecture, urban architecture, landscape architecture, and interior architecture are the four architectural disciplines covered in the ACT Forum. Not only that, the year 2023 marks a significant change in how the forum operates and carries out its activities, as this year's event's "Time of Togetherness" theme strives to facilitate and achieve beautiful, unified, and constructive collaborations.

It is now time to harness the power of collaboration, reaffirm the value of the architectural profession, and inspire the birth of endless new ideas, narratives, presentations, and creations that will benefit the evolving society in the long run.

Korakoth Kunalungkarn
Organizing Chairman of ACT Forum'23

Inter National Forum



Angela Spathonis

Principal | Managing Director
Gensler (Singapore)



About the Speaker

As Co-Managing Director of Gensler's Singapore office, Angela provides leadership on the development and execution of the firm's key business strategies to ensure overall growth while enhancing the service experience for Gensler's world-class clients.

Angela brings to her role over two decades of well-rounded experience and a high level portfolio that spans across multiple countries, sectors and markets. Known as an accomplished project leader who consistently pushes the boundaries of design and user experience, her distinct influence is seen in the innovative design solutions with new spatial concepts across workplace, retail, residential and hospitality sectors. As a dynamic leader, she works closely with her teams and clients to create sustainable businesses and offer strategic solutions that also respect and advance design excellence on multidisciplinary projects across geographic boundaries.

Angela has transformed the mindsets of thousands of business leaders and professionals. As a thought leader, Angela delivers game-changing insights on how businesses can successfully navigate today's complex and challenging business environment to shape the future of cities.

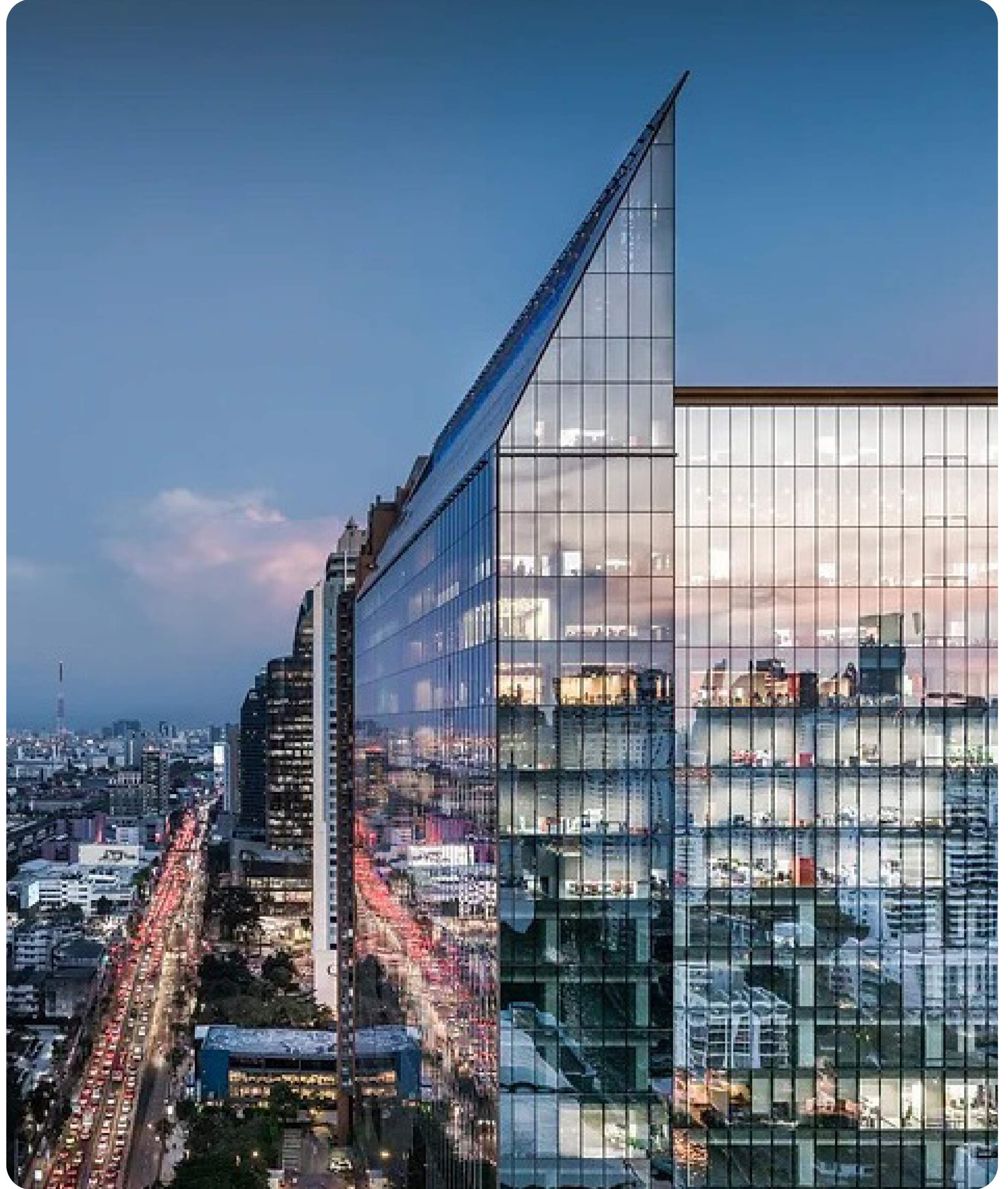
What it means to Create Place

Post COVID-19, the connectedness of people, place, and technology will be explored from the perspectives of place making, digital engagement, sustainability and diversity, exclusivity & inclusivity.

In an era of transitional hybrid work patterns, the underlying principles of what people now seek from the office are influencing why and when they choose to come to the office.

Consideration of these attitudinal changes are influencing decisions on workplace facilities for forward-looking management who seek to entice workers back to the office. Their investments in real estate, facilities and even staff are being challenged, so the desire to provide a workplace that caters for a wider demographic and experience is one tangible aspect in enticing their staff back so as to maximize the investment in the office as well as fortify their corporate culture.

As a result, workplace designers, and even architects, retail and hospitality designers need to be aware of these emerging and often fluid activity patterns to ensure their design responses create a sense of 'place'. This can significantly influence the success of this return to the office, the shopping precinct and travel by generating more meaningful, desirable and rewarding experiences for users.



Rasa Tower II, Bangkok, Thailand

Located in a previously withering district of Bangkok, the Rasa II Tower (79,791 sq. m) infuses new energy into this understated community by providing top-tier class-A office space and much needed amenities, food & beverage outlets and parking for the tenants and surrounding neighborhood. The distinctive yet minimal tapered roof top is our design response to the local diagonal setback requirements. The building's crown is highly visible from the elevated Sirat Expressway - the main thoroughfare connecting the Suvarnabhumi Airport to the city of Bangkok.



CapitaSky, Singapore

CapitaSky (57,000 sq m) is a 29-storey Grade-A office tower with F&B components, strategically located in Singapore's prime Central Business District. The new tower's modern work spaces will cater to firms in information technology, communications and media, banking, finance and insurance as well as those in professional and business services. In support of Singapore's push towards a more car-lite society and to promote a healthier lifestyle, the development will feature secured "end-of-trip facilities" for bicycles and personal mobility devices with supporting amenities such as shower and locker rooms.



Accenture Innovation Hub Tokyo, Tokyo, Japan

Accenture opened its Tokyo Innovation Hub as an experience-driven, state-of-art facility where employees collaborate with clients to turn new ideas into reality. The lower level “neighborhood” is a space for clients, researchers, and entrepreneurs to collaborate and create. Yagura, a Japanese castle and symbol of co-creation, welcomes you to the cityscape-inspired room that features a yatai, or food stand, with tatami design elements as symbols of Japanese attention to detail. The design of the upper level is based on a traditional Japanese merchant house and provides a relaxing home atmosphere with a detached space for extended collaborative work sessions. Together, these spaces provide creative talent an environment to focus on their projects and bring together experts with varied backgrounds to immediately respond to clients’ requests with a holistic multidisciplinary approach.



Viettel Headquarters, Hanoi, Vietnam

Located in Hanoi's new commercial centre, Viettel's one-of-a-kind headquarters (23,710 sq m) is Gensler's first headquarters office building designed and completed in Vietnam. As the hub of Vietnam's largest tele-communication company, this unique structure stands out from a uniform cityscape. The optimized oval geometry fosters a high-energy collaborative working environment through connecting employees via interconnected floor spaces across all eight levels. This includes a 800-seat auditorium which serves to provide a functional event space in the premises itself.

Damian Thompson

Co-owner | Director, LatStudios, Registered Landscape Architect,
Fellow of the Australian Institute of Landscape Architects (FALA)
(Australia)



About the Speaker

Damian Thompson, co-owner and Director at LatStudios, is a life-long devotee to helping bridge natural and cultural systems. Inter-disciplinary collaboration sits at the heart of his practice.

As a landscape architect he's found a profession that allows him to rationalise this addiction – particularly when collaborating on place-specific and ecologically beneficial outcomes with engaged and empowered communities. On top of being captivated by marginal landscapes he has also enjoyed and appreciated a long association with the Queensland University of Technology School of Design.

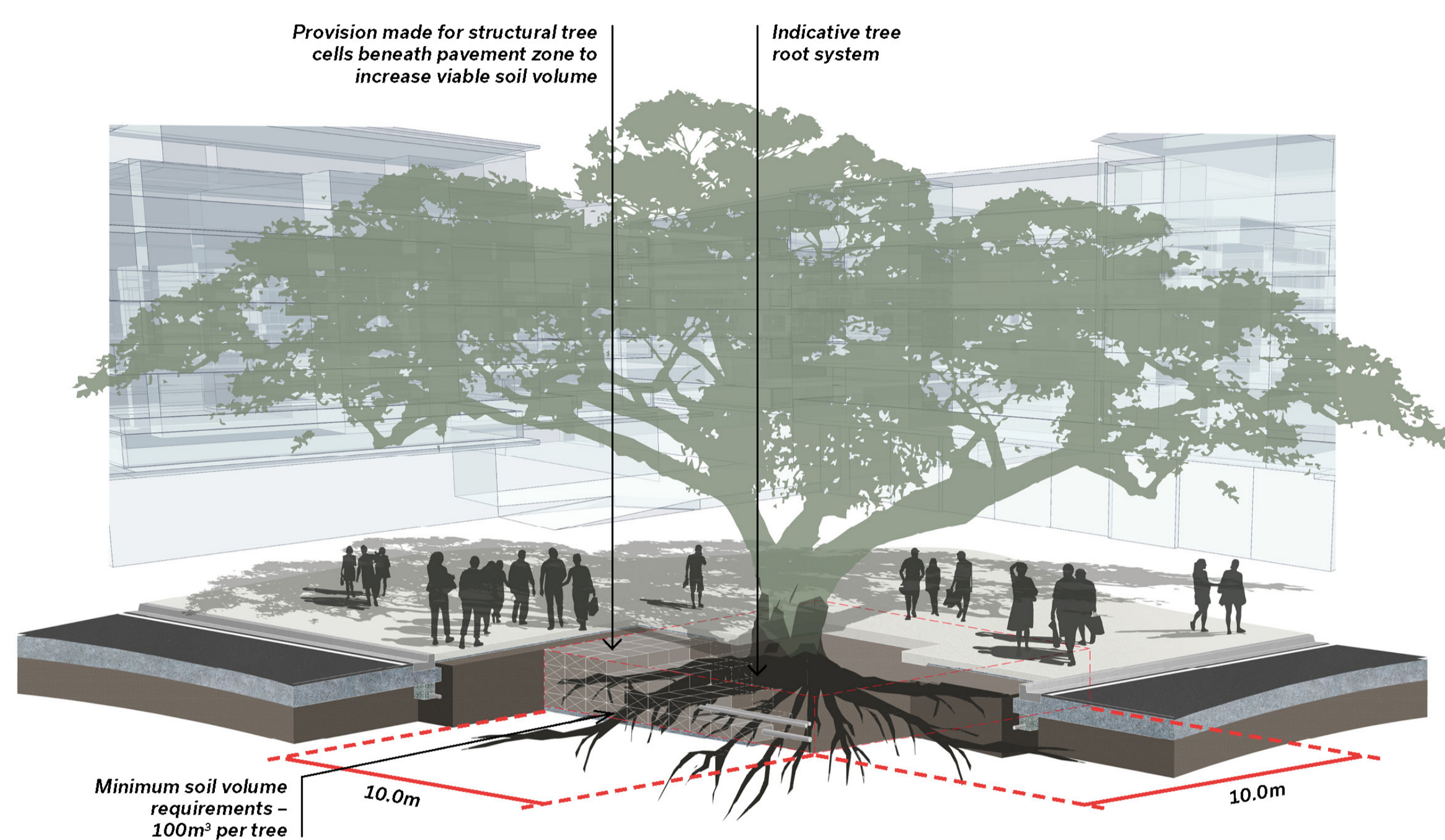
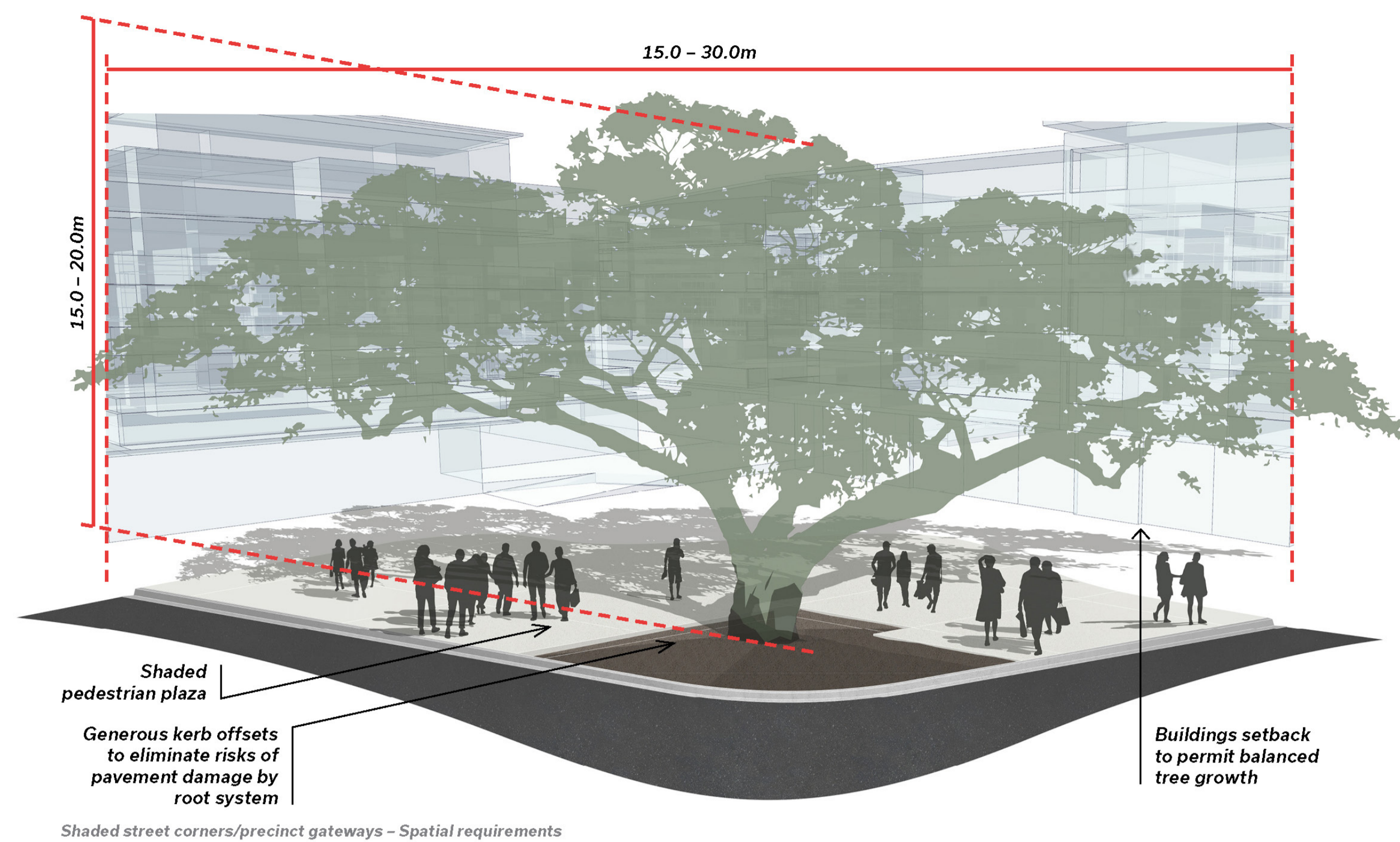
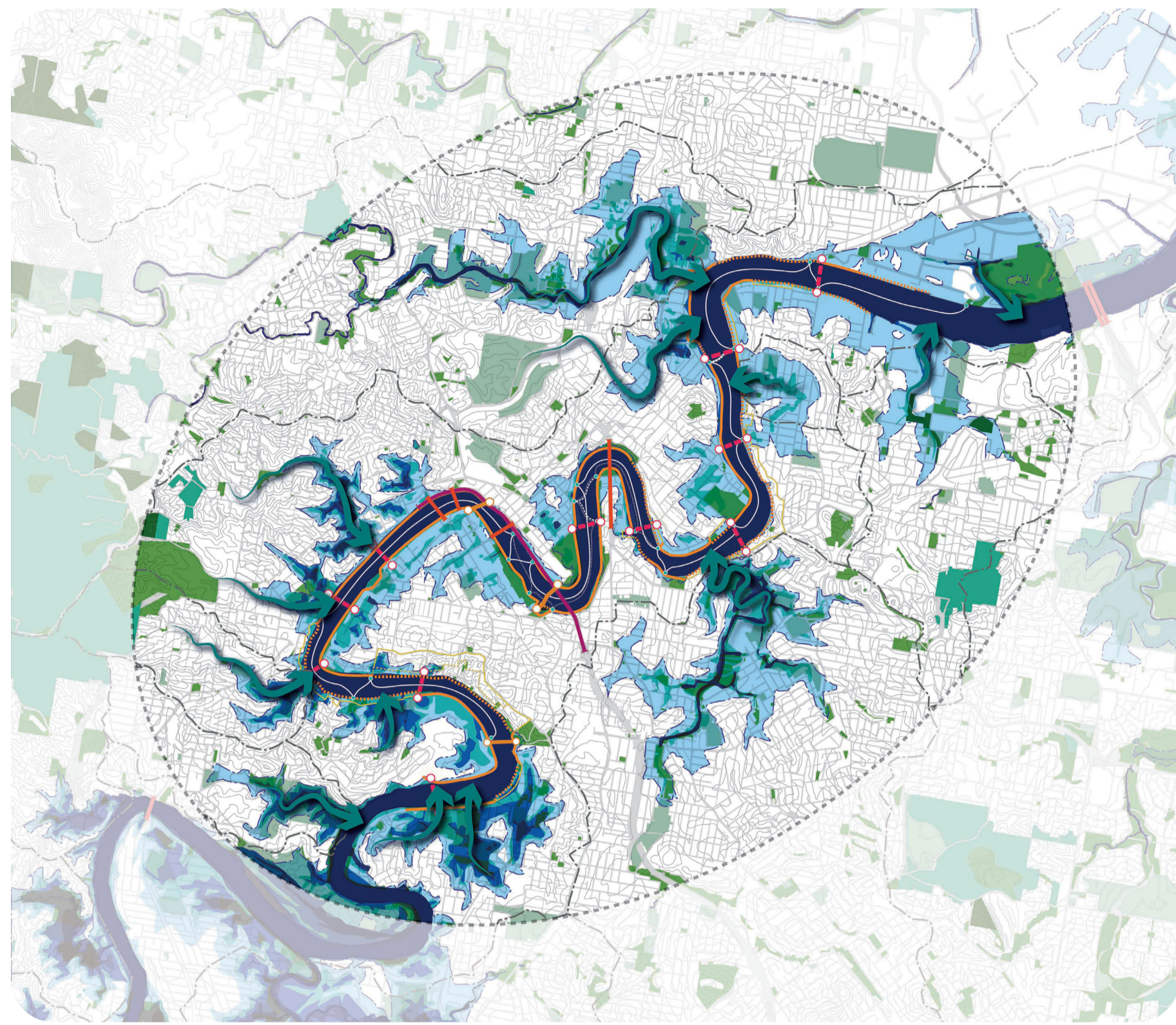
Damian's work over the last 30 years spans urban design and landscape architecture for both public and private clients. He has led and been part of multi-disciplinary teams that deliver award-winning projects ranging in scale from intimate laneways through to major public parklands and urban renewal projects. Each of these projects have interrogated the mutual benefits to be found when balancing the needs of both ecological and social systems.

Damian was awarded a Fellowship from the Australian Institute of Landscape Architecture (AILA) for his contribution to the profession of Landscape Architecture in July 2020.

Collaboration is Life!

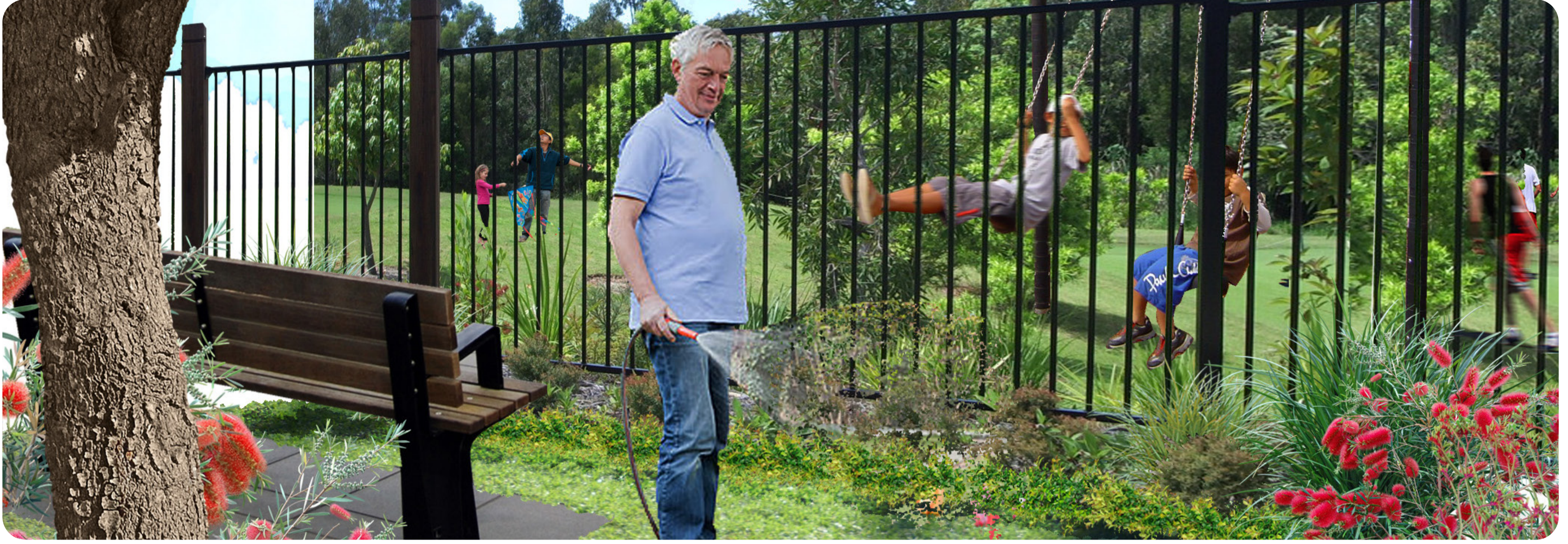
Ditch the ego – we're all in this together: Musings from multi-disciplinary practice operating at the intersection of natural and built environments.

An examination of the positive benefits of collectively embracing diverse, inter-generational thinking through a range of award-winning projects undertaken in our search for harmonious co-existence with the natural world.



Green Grid

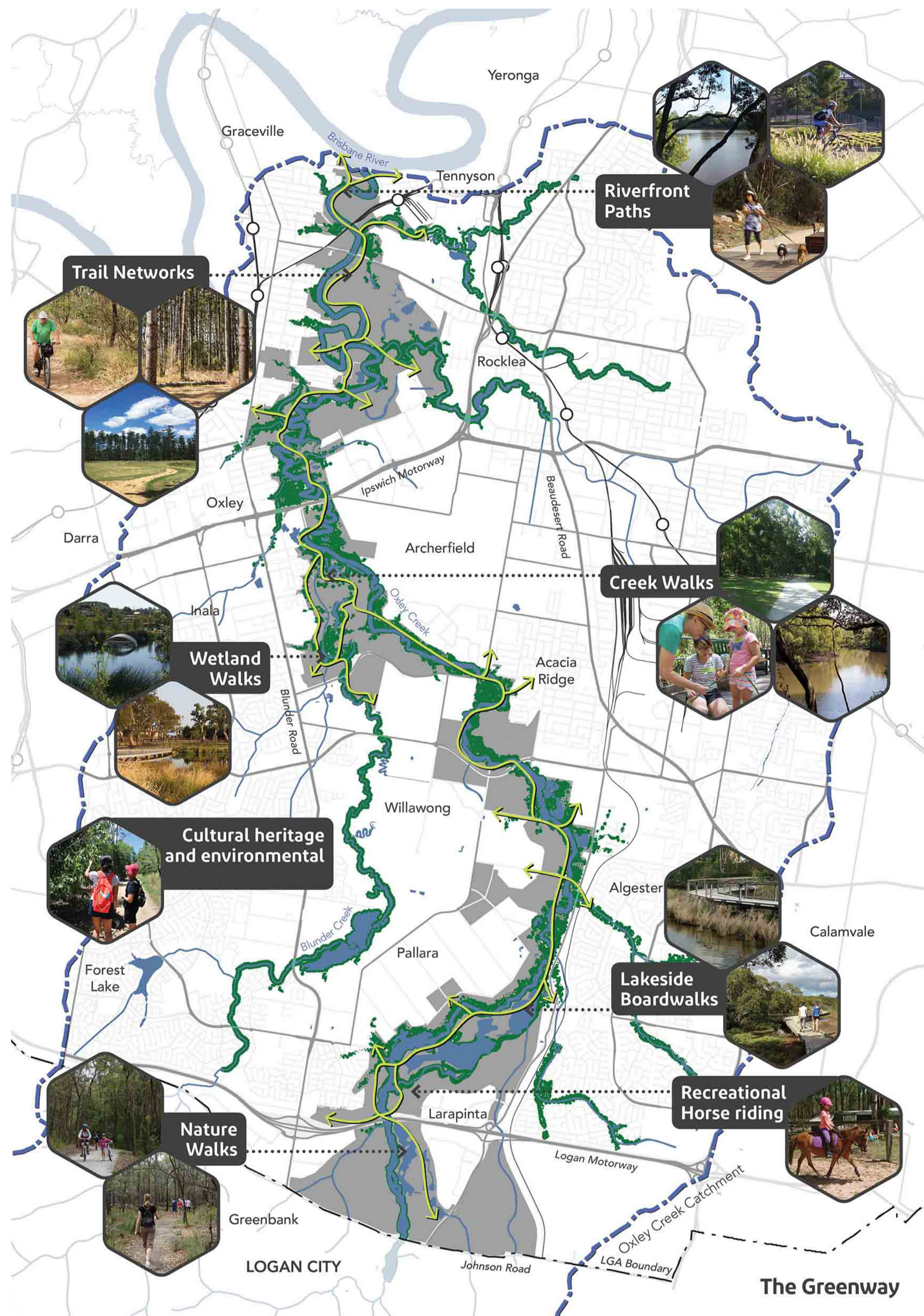
The Green Grid provides the approach required to increase the quantity, quality and interconnectedness of the Brisbane's open space to sustain the city's liveability, preserve natural systems within the city and build in resilience to the impacts of climate change. Globally, cities recognise the importance of green city strategies in terms of defining city image and creating sustainable urban environments that support community health and provide positive places for people to live and work. Brisbane's unique balance between urban and natural, fusion of indoor and outdoor is a key celebration of our subtropical climate. It influences daily life and is critical to the city's image and future liveability



Brisbane City Council's Norman Creek 2026 is a project of ambitious scope and scale – a strategic master plan for the entire catchment of this highly urbanised waterway. Transformational planning of this nature and scale, such as is occurring in cities like Singapore and Seoul, demands in equal measure political will, community support, interdisciplinary creativity and demonstrable built outcomes.

The Master Plan establishes clear goals, objectives, priorities and sequencing to manage corridor growth within known constraints such as flooding and poor waterway health. The overarching aim is to achieve improved liveability, community building, and more resilient and healthy waterways within an urban context. LatStudios, as part of a wider consultant team, contributed our expertise in urban design and public realm design in the context of a water smart, sub-tropical community.

Norman Creek 2026 Master Plan



Oxley Creek Transformation

Brisbane City Council's vision is to transform the Oxley Creek corridor - a 20km highly urbanised waterway from the Brisbane River to Larapinta - into a lifestyle and leisure destination. This Master Plan represents the first major milestone in achieving that vision. Prepared by LatStudios and Oxley Creek Transformation, it offers a contemporary blueprint for a regionally significant, multifunctional open space.

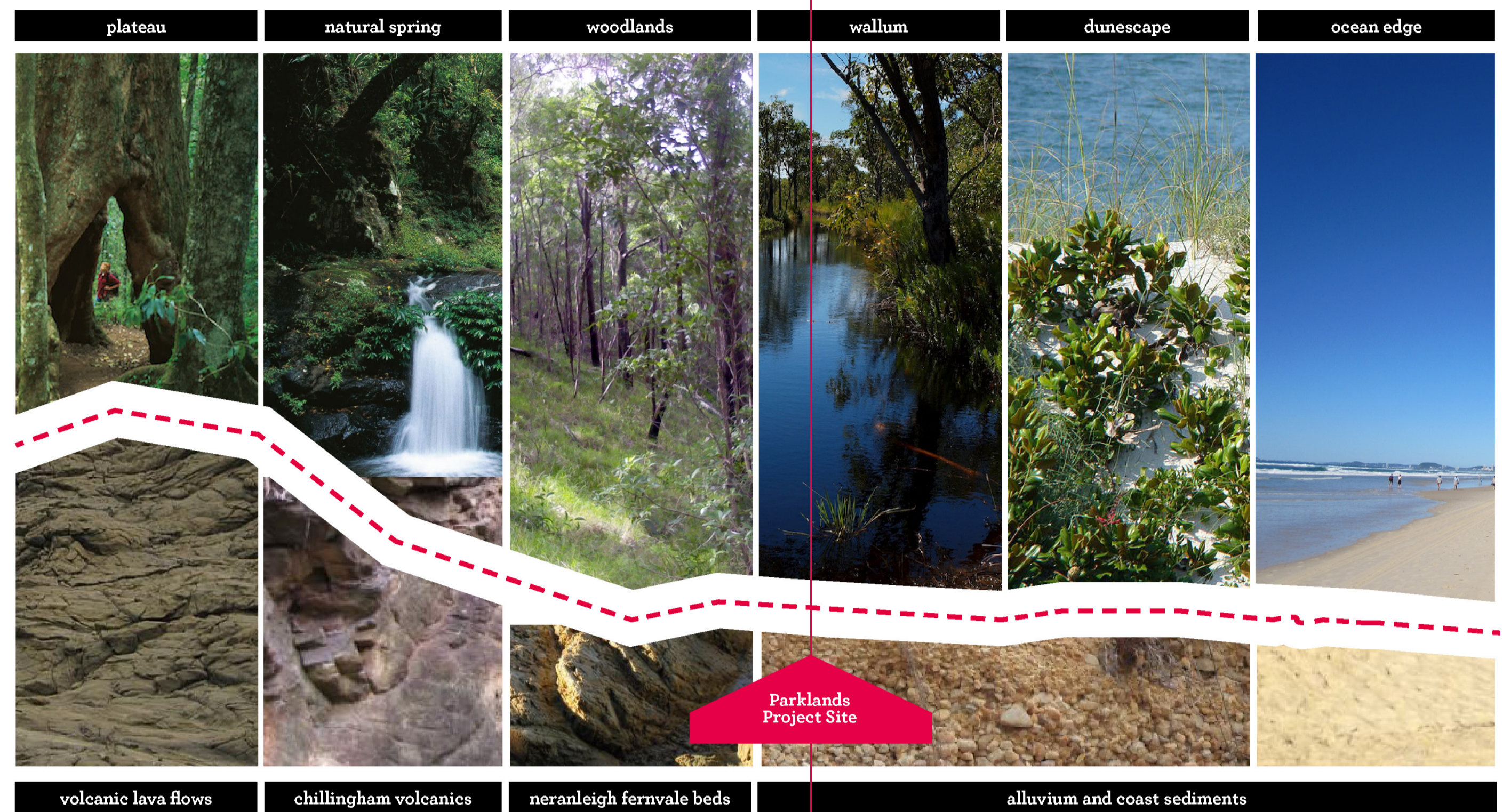
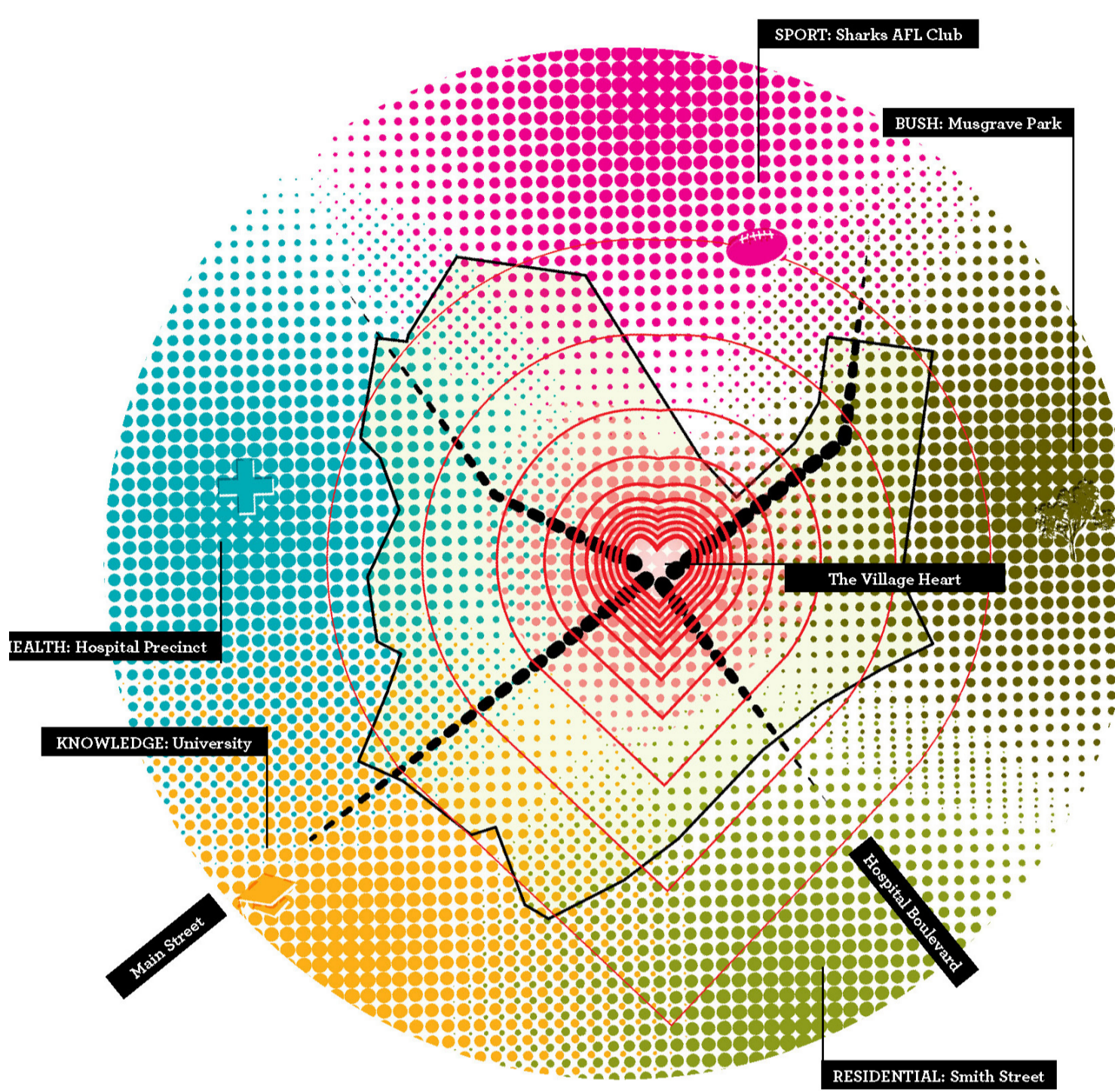
The Master Plan translates an ambition to make Brisbane one of the world's top 10 lifestyle cities into practical action. Recognising the environment as central to our city's liveability, it outlines projects and initiatives to revitalise our most urbanised waterway. Oxley Creek will be reimagined as an urban playground, economic incubator, environmental asset and an incredible new tourism destination.



The benefits of multi-functional urban open spaces for community wellbeing, leisure and city health are now well researched, understood and globally appreciated. The Victoria Park Vision will begin the process for the development of this key site's evolution over the next 50 years. It will be used as a basis for technical studies that will inform a comprehensive master plan and contribute to reshaping the city around a deeper understanding of history, culture and nature.

The vision has been developed by LatStudios in partnership with BCC's City Planning & Sustainability Major Projects team. Key collaborations included Wilkinson Eyre Architects, an international team of supporting consultants, and in particular, technical teams and specialist leaders within Council. Community and stakeholder consultation and ideas generation was undertaken over various events and pop-up displays, and through an extensive program of online public feedback conducted over several months.

Victoria Park Vision



Gold Coast Parklands (Commonwealth Games Athletes Village)

LatStudios designed the Master Plan for Grocon's \$550 million mixed-use master planned development at Parklands on the Gold Coast, featuring more than 1,252 dwellings with a mix of apartments and townhouses, a retail precinct and green landscaped spaces structured around a central public plaza, the 'Village Heart'.

LatStudio's strategy is inspired by the regional landscape's evolution since Mount Warning erupted 23 million years ago. It is a celebration of the local environment incorporating new lakes, water features and waterways set up for both passive recreation and larger community events.

Fun Siew Leng

Chief Urban Designer

Urban Redevelopment Authority - URA (Singapore)



About the Speaker

As Chief Urban Designer at the Urban Redevelopment Authority, I oversee all urban design work for the Central Area of Singapore, which comprises areas like Marina Bay, Singapore River, and Orchard Road. I believe that while urban design is to give structure and form to the city, equally important is its role in shaping the public realm between buildings to become attractive public spaces to support civic and community life. Urban design is about designing the city in context with its history, culture, climatic and environmental conditions, and socio-economic aspirations. I am a strong proponent of architecture and urban design excellence because I believe well-designed buildings and public spaces of today will be the built heritage of tomorrow and the built legacy for future generations.

Shaping Singapore through Urban Design

As a small city-state with virtually no natural resources, land optimisation is needed to ensure that all the land use needs of the nation are accommodated, including planning for the future growth and changing needs of the city. To optimise its land and air space, Singapore has to build denser and taller. Therefore, urban design is important to ensure that the living environment is attractive and offers a high quality of life.

Following Singapore's independence in 1965 and its nation-building years, Singapore was considered as a boring, sterile and unattractive place to be. However, in 2019, Singapore was voted as the most beautiful city in Asia. How did we achieve this transformation?

Singapore's urban design is guided by its aspiration to be a distinctive, dynamic and delightful city. We seek to achieve these outcomes through urban design that operates at the macro, meso and micro scales, from skylines to streetscapes and public spaces. Equally important are the mechanisms, policy levers and incentive schemes that help us turn plans into reality. Urban design must also respond to emerging challenges like climate change, social aspirations, evolving demographics and technological advancements.



Jurong Lake District

Jurong Lake District (JLD) will be the largest business district outside of the central area. A new 120-hectare precinct will connect seamlessly to the existing commercial centre and MRT station via elevated pedestrian linkages and lushly planted streets. It will have a mix of offices, housing and amenities in a car-lite and park setting. With more flexibility in zoning, land tenure and phasing compared to other districts, companies can experiment with new development concepts and innovative ways to integrate live, work and play. At JLD, residents and businesses will collectively shape a sustainable future through shared goals, higher standards and ready technology. The district acts as a “living lab” and regulatory sandbox, providing opportunities to pilot new urban solutions and refine sustainability-centric initiatives.



Marina South

Marina South is planned as a new model for city living. Marina South is an area of 60 hectares that sits in between the Gardens by the Bay and the southern coast of Singapore. It seeks to redefine city living as a forward-looking, mixed-use neighbourhood. It is envisioned as an attractive, sustainable and community-centric district. The urban design for the district focuses on creating a sustainable 10-minute neighbourhood that is characterized by lushly-landscaped, well-connected, pedestrian and cyclist-friendly streets, and a lively and inclusive public realm, with amenities within easy reach for both residents and visitors alike. Marina South is designed to be highly sustainable, by adopting measures to mitigate the Urban Heat Island effect and to improve wind flow through the site, and by requiring all buildings to meet BCA's Green Mark Super Low Energy Platinum certification.

Jakob Dunkl

Founder, Owner, CEO,
querkraft architects

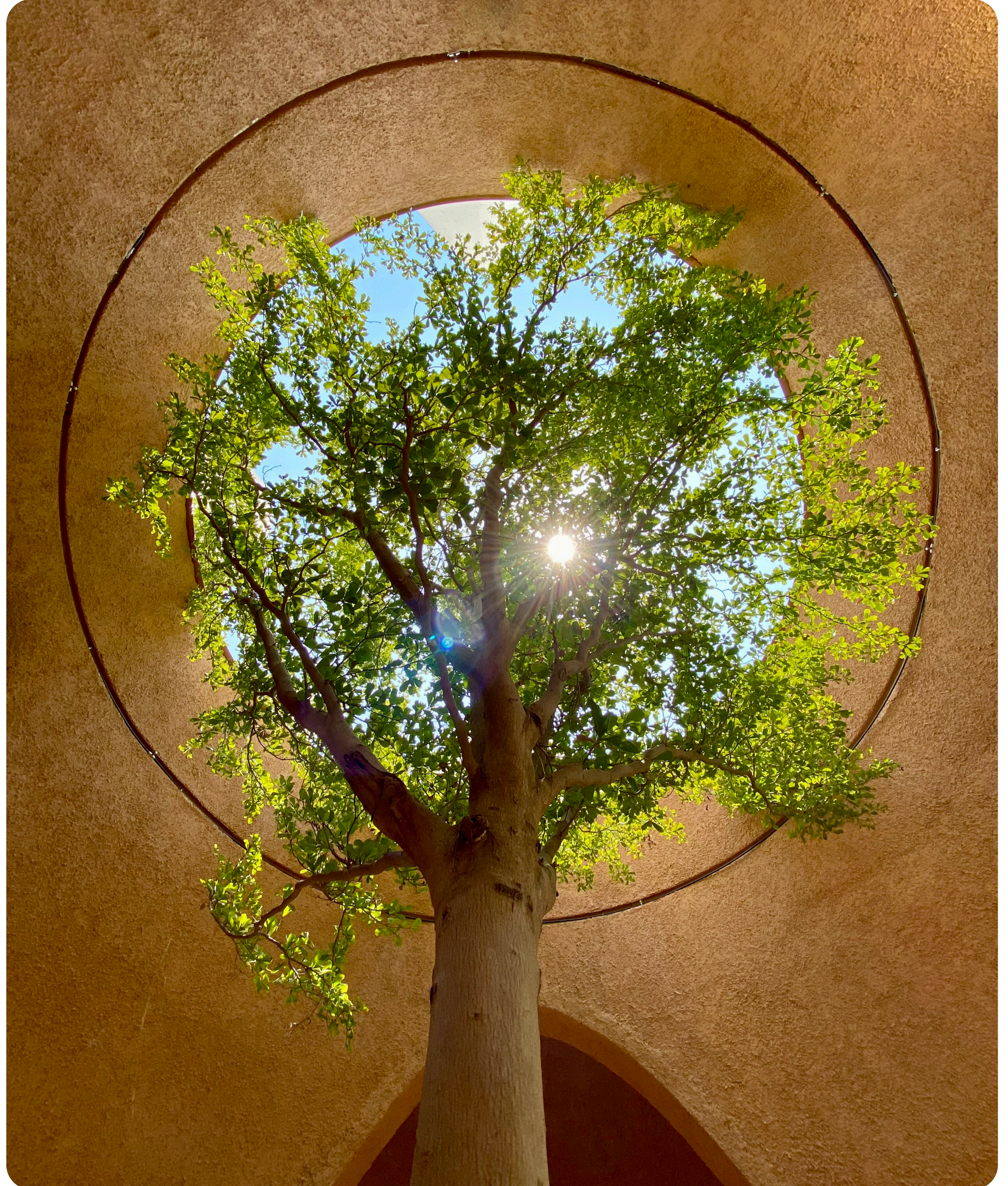


About the Speaker

Jakob Dunkl, born in 1963, is one of the founders and owners of querkraft architekten. Together with Peter Sapp and Gerd Erhardt, he has been searching for unconventional solutions to give people room to develop since 1998. Poetic pragmatism is the phrase that probably best describes the aspirations of the Viennese architecture firm. In addition to various teaching activities and speaker functions in the field of building culture, Jakob Dunkl and his partners have received numerous prizes and awards, such as state prizes or the City of Vienna Prize for Architecture. The querkraft team of about 45 people works primarily in areas such as residential construction, cultural and educational buildings, office and industrial buildings.

Car-Free and Green. an IKEA Store as Good Neighbour

The client's aim: "we want to be a good neighbour". querkraft's idea: stepping back and offering space, sunlight and greenery to the people. there is a 4.5 metre deep zone around the building like a series of shelves that offer shade. it allows spaces to expand, offers room for terraces and planting and for servant elements such as lifts, escape staircases, toilets and building services. The building is a 50 x 50 m open and flexible loft. on the upper two floors there is a hostel. 160 trees in the facade and on the roof, have a perceptible influence on the microclimate. the three-dimensional use of tree provides a greater amount of planting than could be offered by using just the ground alone.



EXPO Pavillon in Dubai, UAE

The Austrian Expo-Pavilion gives an important answer about the future: respectful use of earthly resources. A sensual space is created through a network of 38 intersecting cones. The cone shapes easily develop an aesthetic between light and shadow that invites the visitor to explore.

The dialogue between local building traditions and intelligent Austrian climate engineering is seen as an opportunity. Three quarters of the energy needed for a comparable building can be saved by this measurement. Designed by a puzzle-system the cones could be re-built after the EXPO in Dubai at another site for different use.

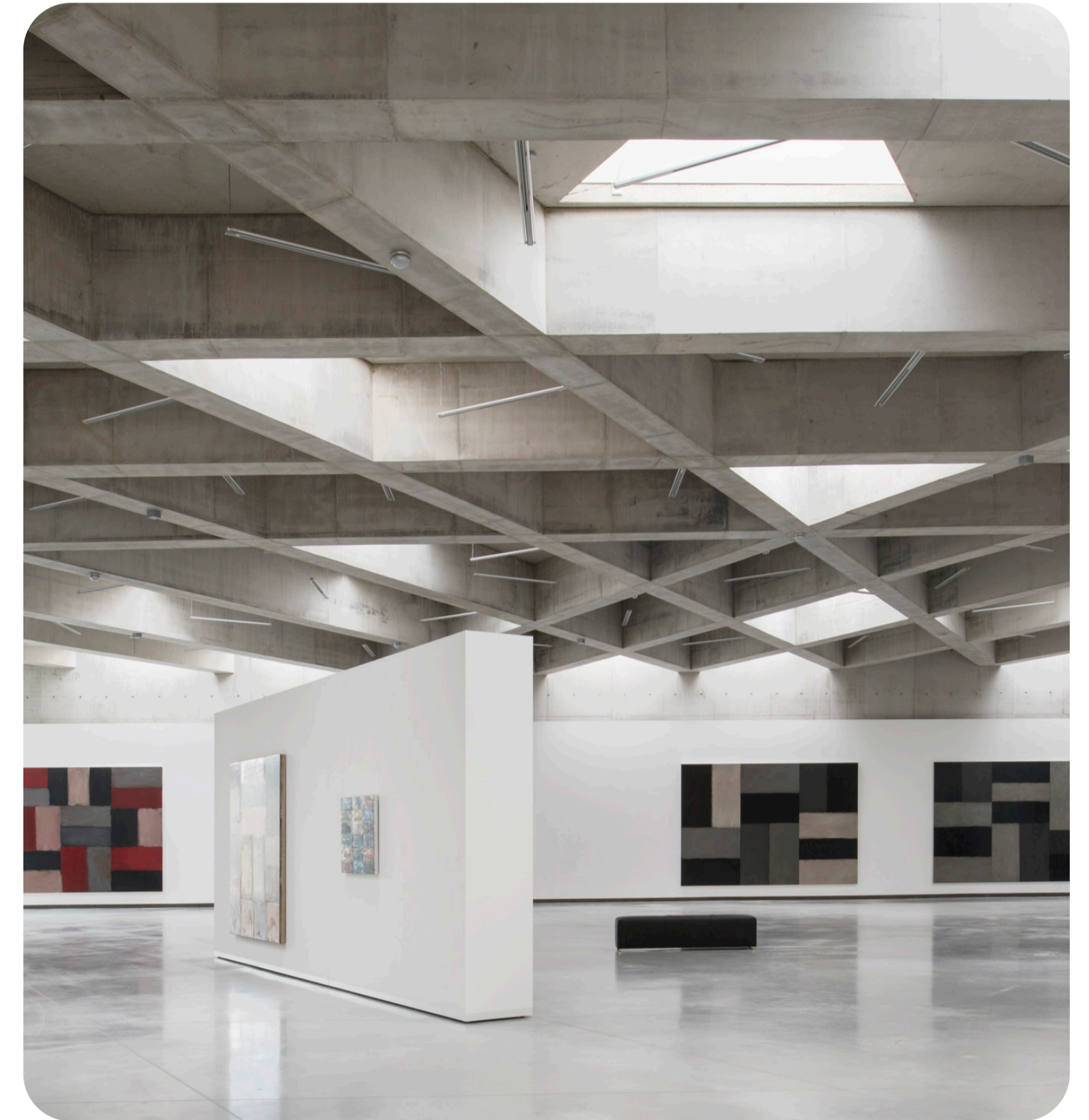


BAT Residential High Rises in Paris, France

Located in the Clichy-Batignolles urban development area, beside a spacious park, the residential high-rise, workers' hostel, and childcare facility form an ensemble planned using ecologically efficient criteria.

Placed diagonally opposite each other, the two apartment towers are set on the property so that a view of the park is guaranteed. The connecting wood-concrete composite pedestal houses a kindergarten and a daycare, its wings enclose two courtyards that lie lower than the street level.

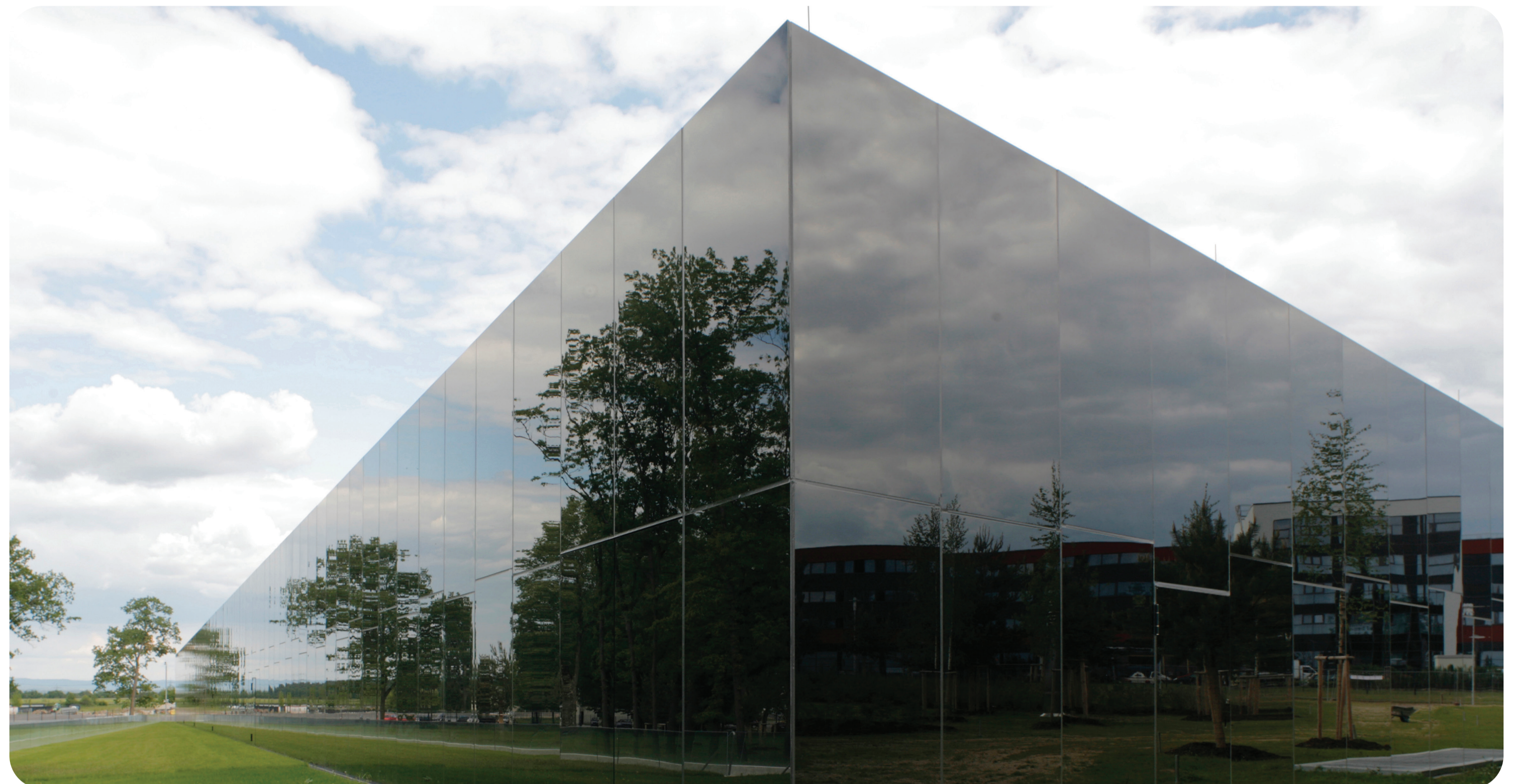
The towers are united by a shell of dark brickwork, accented by elements of silvery aluminum, interpreted in different ways. The windows of the workers' flats are protected by sliding sunshades, that make a lively accent. The aluminum slats of the balcony balustrades of the higher tower are set at different densities and with wavy or jagged top and bottom edges, creating a trompe-l'oeil effect that looks like three-dimensional bulges.



ML Private Art-Museum, Austria

The Museum Liaunig is positioned in the landscape as walk-in land art. The architecture is intentionally reduced in its planning, giving the art a great deal of scope. The raw building bequeaths a simple basis for the exhibits and simultaneously provides it with a robust, clear shell.

The exhibition hall of exposed concrete with an industrial metal shell extends 160 metres as a landmark traversing the hillside. The forcefulness of the architectural experience lies in the concentration on the essentials. It is a museum that gives great scope to the art.



This central building is created for events, presentations, product shows and meeting rooms. As a center of the building serves a multifunctional room (5.000 sqm, room-height 6m), major customers are the main target group.

The design approach: Sovereignty instead of fashionable ephemerality. The black, monolithic glass solitaire asserts oneself for decades, regardless of future fashion trends. Instead of the required foyer, all rooms are accessed via a sunken arena made up of tiered seats. The 150 meter long wall surface opposite is transformed into a huge cinema format by means of 24 video projectors. sound effects achieve the desired emotional charge.

ADBC Adidas Brand Center, Germany

The people in the building - customers, employees and other guests use the spacious arena to relax and to have informal conversations.

Wong Mun Summ

Founding Director

WOHA



About the Speaker

Mun Summ Wong co-founded the Singapore-based architectural practice WOHA in 1994. He is a Professor in Practice at the National University of Singapore's Department of Architecture and co-directs the Integrated Sustainable Design Masters Studio. He is also appointed to the Seidler Chair in the Practice of Architecture at the University of New South Wales in Sydney, Australia. He sits on the Nominating Committee of the Lee Kuan Yew World City Prize, the Design Advisory Board of Design Singapore Council as well as a Member of the CTBUH Masters of Tall Building and Vertical Urbanism Advisory Panel.

WOHA projects are living systems that connect to the city as a whole. With every project, the practice aims to create a matrix of interconnected human-scaled environments that foster community, enable stewardship of nature, generate biocentric beauty, activate ecosystem services and build resilience. WOHA apply their systems thinking approach to architecture and urbanism in their building design as well as their regenerative masterplans. WOHA received a number of architectural awards such as the Aga Khan Award for One Moulmein Rise as well as the RIBA Lubetkin Prize and International Highrise Award for The Met in Bangkok. The practice was awarded the CTBUH Urban Habitat and Best Mixed-Use Building and World Architecture Festival World Building of the Year for Kampung Admiralty and CTBUH Best Tall Building Worldwide for the Oasia Hotel Downtown.

Mun Summ is currently leading projects slated for completion, such as BRAC University in Dhaka, Bangladesh (2023), Pan Pacific Orchard (2023), Punggol Digital District and SIT campus in Singapore (2025).

Form Follows Systems

WOHA co-Founding Director Wong Mun Summ will give an insight into the practice's "Systems Approach", in which every project is viewed as part of a larger social, environmental and economic system. WOHA's buildings are designed as active and productive systems that are integrated into their social, ecological and urban context. With each project, the practice explores how it can optimise systems to create spaces that foster community, enable the stewardship of nature, generate biophilic beauty and versatility, activate ecosystem services and build resilience.



Credit: Patrick Bingham-Hall

Oasia Hotel Downtown

A verdant tower of green in the heart of Singapore's dense Central Business District (CBD), Oasia Hotel Downtown is a prototype of land use intensification for the urban tropics. This tropical "living tower" offers an alternative image to the sleek technology of the genre.

WOHA created a series of different strata of offices, hotel and club rooms, each with its own sky garden. These additional "ground" levels allow generous public areas for recreation and social interaction throughout the high-rise, despite the inner-city high-density location.

Landscaping is used extensively as an architectural surface treatment and forms a major part of the development's material palette both internally and externally, achieving an overall Green Plot Ratio of 1,100%.

The tower's red aluminum mesh cladding is designed as a backdrop that reveals itself in between 21 different species of creepers. Instead of a flat roof, the skyscraper is crowned with a tropical bower; floral, diverse, soft and alive.

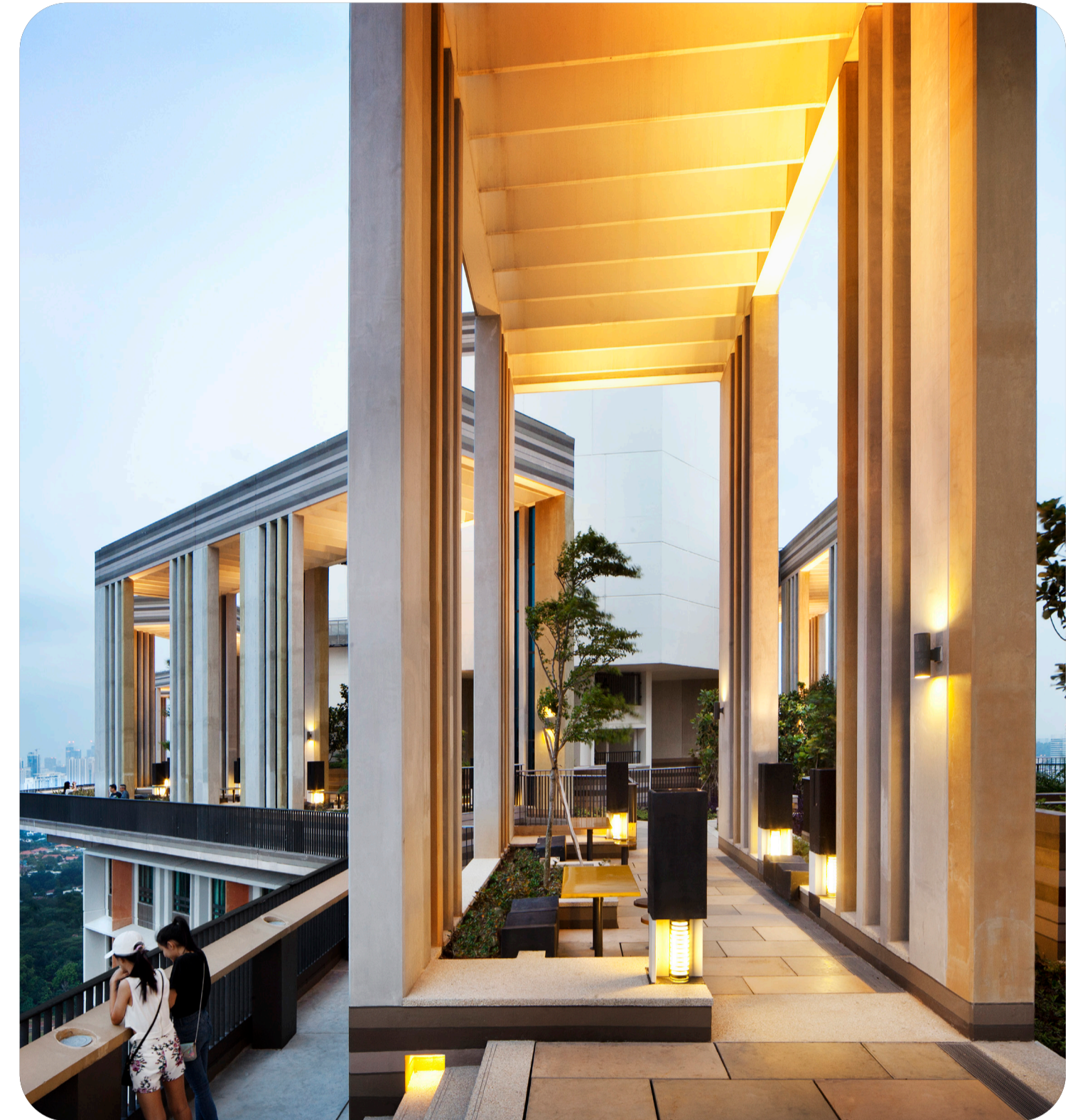


Credit: Patrick Bingham-Hall, Darren Soh

Kampung Admiralty

Kampung Admiralty is Singapore's first one-stop integrated complex maximises land use and the benefits of co-locating a mix of public housing for senior citizens and other facilities and services under one roof.

The compact site prompted a layered 'club sandwich' approach. The result is a "Vertical Kampung (village)", with a Community Plaza sheltered by a Medical Centre supporting a rooftop Community Park overlooked by apartments for seniors. These three distinct layers juxtapose the various building uses to foster diversity of cross-programming and frees up the ground level for activity generators. The proximity to healthcare, social, commercial and other amenities support inter-generational bonding and promote active ageing in place.



Credit: Patrick Bingham-Hall

Whilst many cities are struggling to house their populations in humane conditions, this project sets a very high standard for subsidized housing, not only providing excellent homes, but setting these within a three-dimensional matrix of community space to ensure that strong bonds are formed between neighbours.

SkyVille @ Dawson is a public housing project commissioned by the Housing and Development Board of Singapore on a strict public sector budget. Three main themes - community, variety and sustainability - form the basis of the design. Each home is designed to be part of a Sky Village comprising 80 homes that share a naturally-ventilated community terrace and skygarden. Every tower is composed of 4 vertically stacked Sky Villages, with the 3 towers linked horizontally. Despite the 960 homes, there is not a single internal corridor in the development. Public space for various types and sizes of community groups are distributed through the towers and the ground plane, and are fully open to the public. The entire roof is a public park with a 300m walking track.

SKyVille @ Dawson

Thai Forum





Sinit Boonsith

Director of Building Control Bureau, Department of Public Works and Town & Country Planning

Profile

Director of Building Control Bureau (2014-present)



Associate Professor

Dr. Chuphong Thongkumsamut

Dean of the Faculty of Architecture, Khon Kaen University

Profile

Born on August 21st, 1976, Associate Professor Dr. Chuphong Thongkumsamut graduated with a bachelor of architecture (with honors) from the Department of Architecture of Khon Kaen University's Faculty of Architecture in 1998, a master of architecture (building technology) from the Faculty of Architecture, Chulalongkorn University in 2001, and a Doctor of Philosophy program in architecture from Chulalongkorn University in 2009.

The current Dean of Khon Kaen University's Faculty of Architecture has written a number of academic works, including A Textbook on Climate Change and Sustainable Architectural Design, Feng Chui and Architecture, and coursework documents for building technology and building technology integration classes.



Prakorn Eiam-sa-ard

Director of Strategy and Planning Division, Department of Alternative Energy Development and Efficiency, Ministry of Energy

Profile

- Head of New Building Standard Control and Regulations Cluster, Department of Alternative Energy Development and Efficiency
- Mechanical Engineer, Senior Professional Level, Designated Factory Cluster
- Bachelor of Engineering Program in Mechanical Engineering, King Mongkut's University of Technology Thonburi
- Master of Science Program in Energy Technology and Management, King Mongkut's University of Technology Thonburi



Air Vice Marshall M.L. Prakitti Kasemsan

Qualified expert in the Committee of Public Procurement and Supplies Policies

Profile

- 1967-1975 Bangkok Christian College
- 1976-1981 Bachelor of Architecture, Chulalongkorn University
- 2000-2002 Master of Business Administration Program (Management) Kasetsart University
- 2007 Air War College
- 2015 The budget supervisor development program, Bureau of the Budget, Office of the Prime Minister
- 2019 Advanced Certificate Course in Politics and Governance in Democratic Systems for Executives, King Prajadhipok's Institute
- 2020 Executive Architect Council Training, Architect Council of Thailand



Taweejitr Jantharasakha

Former President of the Association of Siamese Architects under Royal Patronage

Profile

Education

- 1982 Bachelor of Architecture, Chulalongkorn University, 1982
- 2008-2010 / 2010-2012 President of the Association of Siamese Architects under Royal Patronage



Dr. Chalay Kunawong

Managing Director of Ongsa Architects Company Limited

Profile

Doctor's Degree: Art Education, Ohio State, United States of America, 1986

Master's Degree: Architecture, Ohio State, United States of America, 1981

Bachelor's Degree: Architecture, King Mongkhut Institute of Technology Lad Krabang



Roongthip Limpaphinan

Director of Budget Standard Division 1, Bureau of the Budget

Profile

Education

- Bachelor of Science (Agriculture), Kasetsart University
- Master of Science (Agricultural Economy), Kasetsart University

Training

- The 15th High level executive training program (Class of 2022)
- The 14th Foreign Affairs Executive Programme
- The 6th Budget Management for High-Level Executives Program

Work Experiences

Began working for the government in 1993 as a budget analyst officer at the Bureau of the Budget, with experience in both budget analysis and academic projects.

In the area of budget analysis, Roongthip served as an expert budget analyst for the budgeting division, working on budget integration for official overseas operations (fiscal years 2020–2022).

Roongthip is the current director of Budget Standard Division 1 and is in charge of the specification and development of durable articles, building material standards, construction work-related compensation, and operating expense rates for government agencies and the private sector.



Assistant Professor

Dr. Prin Jienmaneehotchai

President of Thai Urban Designers Association, Head of bachelor of architecture program (urban and regional planning), Department of Urban and Regional Planning, Faculty of Architecture, Chulalongkorn University / Assistant Dean of Chulalongkorn University

Profile

Education

- Ph.D., Ecole Doctorale: Ville, Transport et Territoires, Université Paris-Est, Paris, France, 2019 (urban development and revival, and water management).
- M.UD., DPEA (Architecture), Ecole Nationale Supérieure d'Architecture de Paris la Villette (ENSAPLV), Paris, France, 2004, (urban design of Asia Pacific cities)
- Bachelor of Architecture (Architecture), Chulalongkorn University (1999).



Dr. Pereeya Boonchaiyapruerk

Vice President in academic affairs of Thai Urban Designers Association / Deputy Director of Urban Ally Center, the Faculty of Architecture, Silpakorn University

Profile

Education

- Ph.D. (Urban Form and Society) University College London, UK (2560)
- M.Sc. (Advanced Architectural Studies), University College London, UK (2555)
- Master of Architecture (Architecture), Silpakorn University (2008)
- Bachelor of Architecture (Architecture), Silpakorn University (2006)

Current Place of Employment

- Department of Urban Design and Planning, Faculty of Architecture, Silpakorn University



Assistant Professor

Dr. Nuttawut Asawakovitwong

Assistant Dean for Academic Affairs, School of Architecture, Sripatum University / Director of CISR, School of Architecture, Sripatum University

Profile

- Dr.rer.pol. (Planning Studies) Universitat Kassel, Germany, 2008
- M.Sc. (Urban Environmental Management), Asian Institute of Technology, Thailand, 2001
- Bachelor of Architecture (Architecture), King Mongkut's Institute of Technology Ladkrabang, 1998

Area of Expertise

Planning for development, participatory approach, environment and urbanization, housing for people with low income



Tanasarn Suthabunditpong

Architect and co-founder of PODS: PATH OF DESIGNS STUDIO / Guest Lecturer at School of Architecture, Sripatum University

Profile

Education:

- 2007 / Bachelor Of Architecture Program in Architecture, Silpakorn University, Thailand
- 2010 / Master Of Architecture Program In Architecture, Silpakorn University, Thailand



Representative from Creative Economy Agency (Public Organization)

Sakonwan Khaiman

Senior Urban Designer, Healthy Space Forum

Pundita Haetanurak

Urban Designer, Healthy Space Forum

Sirada Darikarnonta

Senior Urban Designer, Healthy Space Forum

Rawiporn Wittayabenjang

Urban Designer, Healthy Space Forum

Wanpat Matungka

Senior Urban Designer, Healthy Space Forum

Wachirakorn Arsasutjarit

Urban Designer, Healthy Space Forum

Thanchanok Wongthawilap

Urban Designer, Healthy Space Forum

Profile

The Healthy Space Forum, operated by Chulalongkorn University's Department of Urban and Regional Planning and Faculty of Architecture, aims to expand the body of knowledge and propel urban space development for people's better health and well-being.

Sakonwan Khaiman has actively pushed forward the formation and implementation of strategies and policies aimed at promoting creative healthy space designs and developments in Thai society through projects such as the Silom Master Plan (WOW 2022 Awards), Yothi Medical & Health Innovation District (WOW 2022 Awards), City Lab Thailand in five different areas (Silom, Saraburi, Chainat, Chiang Rai, and Patong), Smart National Sports Park, and the Physical Activity Masterplan.



Associate Professor Wiwat Taymephan

Honorary Advisor of the subcommittee of criteria development for Thai architectural professional



Nithi Sthapitanonda

National Artist in Contemporary Architecture (2011)
Founder, Architects 49 Limited

Profile

Education

- Master of Architecture, University of Illinois, Urbana-Champaign, U.S.A. 1973
- Bachelor of Architecture, Chulalongkorn University, Bangkok. 1971

Honorary Doctorate

- Honorary Doctorate in Architecture, Chiang Mai University, 2016
- Honorary Doctorate in Architecture, Khon Kaen University, 2016
- Honorary Doctorate in Science in the field of Architecture, Sripatum University, 2014



Professor Wanida Puangsunthorn

National Artist, Visual arts and Applied art (Thai Architecture) (2013)

Profile

Professor Wanida Puangsunthorn is a professor at the department of Thai architecture, Faculty of Architecture, Silpakorn University, with expertise in Thai architecture, vernacular architecture, architectural history, and a variety of other Thai architectural art and conservation subjects. Her role as an educator stems from her desire to continue passing on the spirit of Thai architecture to the younger generation with an interest in Thai architecture (in addition to her such as academic essays, textbooks, and design projects throughout the country and internationally).

The knowledgeable and trained practitioners of the next generation will be able to better contribute their expertise to the development and conservation of Thai architecture. Not only that, as the Chairman of the Curriculum Committee, Professor Wanida Puangsunthorn has led the development of the Bachelor of Architecture and Master of Architecture programs in Thai architecture. Since the first class of Thai architecture students enrolled in the Faculty of Architecture at Silpakorn University in 1994, these academic programs have made significant contributions to the inheritance and creation of the nation's architectural legacy. Graduates of the programs have grown to be expert practitioners of Thai architecture conservation and creation. Professor Wanida Puangsunthorn has taught in several educational institutes and collaborated with personnel from various governmental agencies, private companies, and organizations to help enable the carefully planned-out undertakings and appropriate direction of cultural operations.

Professor Wanida Puangsunthorn has been appointed to several cultural project committees. Her responsibilities include educating, providing understanding, and guiding the cultural operations of communities, localities, governmental agencies, and organizations. Among her collaborative endeavors is "Cultural Landscape Management" by the Office of the National Culture Commission, the project whose study and gathering of cultural bodies of knowledge led to the birth of the first publication in this field in Thailand in 2006. Many more studies have been conducted as a result of the book by other professors and academics. Until today, Professor Wanida Puangsunthorn has continued to share her knowledge and experiences to educate the public about the cultural aspects of architecture.

The subcommittee of criteria development for Thai architectural professional standard under the Architect Council of Thailand and outside experts



Somchai Jongsaeng

Design Director & Managing Director,
DECA Atelier Co., Ltd.

Profile

Awards

- Artist “Silpathorn Award” of the year 2009 for Creative Design in the category of Interior Architecture and Decorative Arts from the Office of Contemporary Art and Culture (OCAC), Ministry of Culture.
- Outstanding Alumni Award from Silpakorn University Alumni Association
- Designer of the Year 2005 in the category of Interior Architecture and Decorative Arts
- TIDA AWARDS 2010 BEST OF Corporate
- TIDA AWARDS 2019 BEST OF CULTURAL AND EDUCATIONAL SPACE DESIGN



Poomsak Teankaprasith

Design Director & Founder, Dot Line Plane Company Limited

Profile

Poomsak Teankaprasith is an architect, designer, and the founder of design studio Dot Line Plane and menswear brand PAINKILLER Atelier. His design accolades span across architecture, interior design, furniture, fashion, and lifestyle products, with a special expertise in food and beverage and hospitality projects, as well as branding. Poomsak Teankaprasith is still actively working in the realm of design with many roles, including design consultant, special speaker, and university lecturer.



Saivipa Patpongpibul

Executive Director, P49
Design & Associates Co., Ltd.

Profile

After earning a bachelor’s degree in architecture from Cornell University in the United States, Saivipa returned to Thailand and began working for P49 Design, the firm her mother founded, where she has been for the past 18 years.



Phongphat Ueasangkhomset

Design Director, Anonym

Profile

Phongphat Ueasangkhomset was born on September 5, 1979, in Bangkok, Thailand. Initially attending the King Mongkut’s University of Technology Thonburi (SoA+D), where he earned a bachelor degree in architecture in 2003. His interest in Asian and tropical architecture started since his academic years.



Saruta Kiatparkpoom

Manager Director & Designer,
Pin Metal Art Co., Ltd.

Profile

Specialization

- Waste Steel , Reuse Steel

Education

- B.F.A (Visual Art – Imaging Art) Faculty Of Fine Arts, Srinakharinwirot University
- M.F.A. Art&Design Faculty of Decorative Arts, Silpakorn University

PiN is Artist and Designer based in Bangkok Thailand, Transform reuse steel to make Arts Objects and Home Decoration Items.



Thanapol Sirithanachai

Country CEO-Thailand, Frasers Property (Thailand) Public Company Limited (FPT)

Profile

Thanapol Sirithanachai is the current country CEO-Thailand at Frasers Property (Thailand) Public Company Limited (FPT), Thailand's first fully integrated real estate platform with residential, industrial, and commercial projects totaling approximately USD \$40.3 billion in assets. Thanapol's expertise in the real estate industry is evidenced by his three decades of experience prior to his CEO role. Prior to joining Frasers Property, he was the president of Golden Land Property Development Public Company Limited, where he turned the company's six-year loss into a profit within the span of only three years. Thanapol is also actively involved in a number of social and public projects, including the IMET Mentorship Academy for Excellent Leaders and the IMET MAX Foundation for the Institute of Management Studies of Thailand, both of which seek to nurture talented and great new generations of leaders.



Noppadon Tanpiwat

CEO, Design 103 International Co., Ltd. (D103i)

Profile

Education

- Bachelor of Architecture, Silpakorn University, Bangkok

Career

- 2020 – Present: Chief Executive Officer, Design 103 International Ltd.
- 2018 – 2020: President, Design 103 International Ltd.



Arisara Chaktranon

Co-Founder & Design Director, Onion Co., Ltd.

Profile

Onion profile

Onion is a Bangkok-based design practice founded in 2007 by Arisara Chaktranon and Siriyot Chaiamnuay . The two designers carry out a continuous exploration aimed at different needs for contemporary life styles. Onion brings the local craftsmen to explore the new techniques of using local materials. Together, they constantly push the boundaries of spatial designs in order to form a unified approach to retail and living experiences. The studio's portfolio includes a variety of products ranging from interior objects such as handmade lamps, chairs, tables, to architectural designs such as the boutique hotels entitled Sala at various locales.

Arisara Chaktranon is a design director who co-founded the Bangkok-based architecture firm Onion in 2007 with a friend Siriyot Chaiamnuay. The 15-person practice is often tasked with creating culinary concepts with a sense of place and meaning.



Namchai Saensupha

Co-Founder, Shma Co., Ltd.

Profile

Landscape Architect

Co-founder of Shma Co., Ltd.

President of Thai Association of Landscape Architects (2020-2023)

**Pornpimon Piumpongsuk**

Director, Bo Steiber Lighting Design (Thailand) Co., Ltd.

Profile

Pornpimon Piumpongsuk has a background in architecture. Her affection in lighting springs when she was an architectural student and she went to further education in her both passion subjects architecture as well as light and lighting.

With her background in architecture, lighting is the fourth dimension to architecture, light and lighting can bring emotional value to architecture. An interplay of architecture and lighting is her point of convergence.

She joined Bo Steiber Lighting Design Singapore in 2000. She has across the board lighting design experience in mixed use, highrise, commercial, retail, hospitality and residential projects.

**Chutimaree (Mali) Chulakiet**

Partner, be>our>friend studio

Profile

- MA Communication Art and Design, Royal College of Art, London, England, MA (RCA) Master of Arts, Communication Art and Design, 2002
- BA (Hon) Graphic Design — First Class Honour, Central St.Martins College of Art and Design, London, England, Bachelor of Arts, Graphic Design, 1997
- BA Communication Arts, Chulalongkorn University, Bangkok, Thailand, Major in Advertising, Supporting in Public Relations, 1994

**Wiwat Limanondumrong**

Project Manager, Thai Obayashi Corporation Ltd. (TOC)"

Profile

2012-2014 Project Manager: Aia Sathorn Tower Project.

2015-2019 Project Manager: Langsuan (Sindhorn) Village Project.

2020-2022 Project Manager: Queen Sirikit National Convention Center Renovation Project.

**Wuttinun Jinsiriwanich**

Senior Professional Level Interior Designer, Office of Architecture, Fine Arts Department, Ministry of Culture

Profile

The Collaborative Forum Museum is a group of designers, architects, landscape architects, interior designers, exhibition designers, lighting designers, and narrative designers who collaborate to help develop state-run museums such as the National Museum and several other museums that exist as historic sites and in communities across the country.



Assoc. Prof. Phanchalath Suriyothin

Associate Professor, Department of Architecture, Faculty of Architecture, Chulalongkorn University

Profile

Associate Professor Phanchalath Suriyothin received a bachelor's degree in architecture from Chulalongkorn University's Faculty of Architecture and master's degrees from the Master of Science Program in Environmental Design and Engineering and Light and Lighting from The Bartlett School of Graduate Studies, University College London. She is currently a tenured professor at Chulalongkorn University's Faculty of Architecture.

Apart from her twenty-year experience as a higher education educator, Assoc. Prof. Phanchalath Suriyothin has been involved in a number of lighting design projects, including the lighting design for the National Gallery Phranakorn, the international lighting event, Light Asia Bangkok 2017, which took place inside Pathumwanaram Rachaworawiharn Temple in Phutawas district, and the design of creative illumination for the city of Vientiane for six consecutive years. She is also a member of the working committee of the Illuminating Engineering Association of Thailand (TIEA), which worked on making guidelines for indoor and outdoor lighting design. Her other accolades include research in illumination and lamp design, her own patented lamp designs, and the lighting design of several landmarks and heritage buildings, such as Rama VIII Bridge, Tewawes Palace, the Phra Chuthathut Palace, or Sichang Palace, and its indoor exhibition spaces.



Dr. Pornthum Thumwimol

Senior Professional Level Landscape Architect, Office of Architecture, Fine Arts Department, Ministry of Culture

Profile

- Associate Member of the Academy of Arts under the Royal Society of Thailand (Architectural arts, Landscape Architecture)
- Chartered Architect, Architect Council of Thailand
- 2022 Outstanding Civil Servant Award

Dr. Pornthum Thumwimol is the current Director of the Landscape Architecture Division of the Fine Arts Department's Office of Architecture. He earned a bachelor's degree in landscape architecture from Chulalongkorn University's Faculty of Architects before receiving the French Government Scholarship to pursue his master's and doctorate degrees in France. In 2017, Dr. Pornthum Thumwimol was awarded an honorary doctorate degree in landscape architecture by Thammasat University.

His landscape architectural design and conservation practice under the Office of Architecture of the Fine Arts Department has produced several outstanding and recognized works, including the design of the Phanom Roong Tourism Information Center in Buriram province, which managed to earn him the Golden Medal Award for Outstanding Contemporary Thai Architecture from the Vodhyakarn Varavarn Foundation and the Association of Siamese Architects in 1992. His other achievements include the design of the landscape architecture and layout of King Bhumibol the Great's Royal Crematorium, for which he received an award from the Thai Association of Landscape Architects.

Dr. Pornthum Thumwimol is also a landscape architecture special lecturer at Chulalongkorn University, Thammasat University, and several other Thai educational institutions.

**Thanarat Sodsup**

Manager Director & Designer, Pin Metal Art Co., Ltd.

Profile

Education: Bachelor of Architecture,
Chulalongkorn University

Profession: Professional Level Architect, Office of
Architecture, Fine arts Department

**Charinee Artachinda**

Professional Level Architect, Office of
Architecture, Fine Arts Department, Ministry
of Culture

Profile

Professional Level Architect, Office of Architec-
ture, Fine arts Department, Ministry of Culture /
Narrative Designer

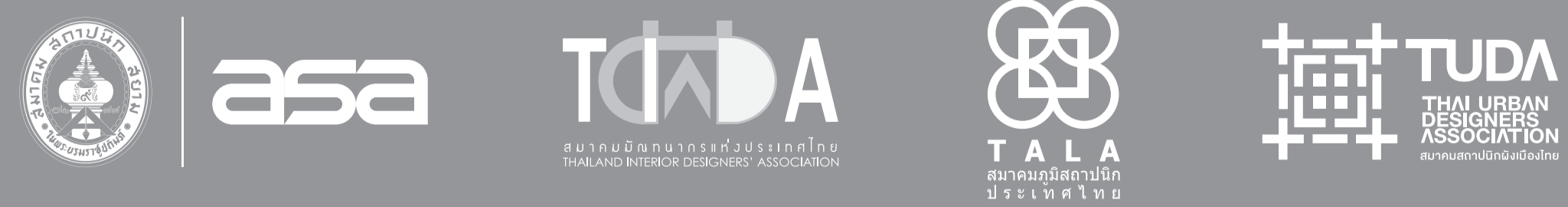
2012: Master of Arts (Distinction) in Creative
Practice for Narrative Environments University
of the Arts London, Central Saint Martins
College of Arts and Design

2000: Bachelor of Architecture (Thai Architec-
ture), Faculty of Architecture, Silpakorn
University

Organized by



In Partnership with



Sponsored by



www.actforum2023.com